



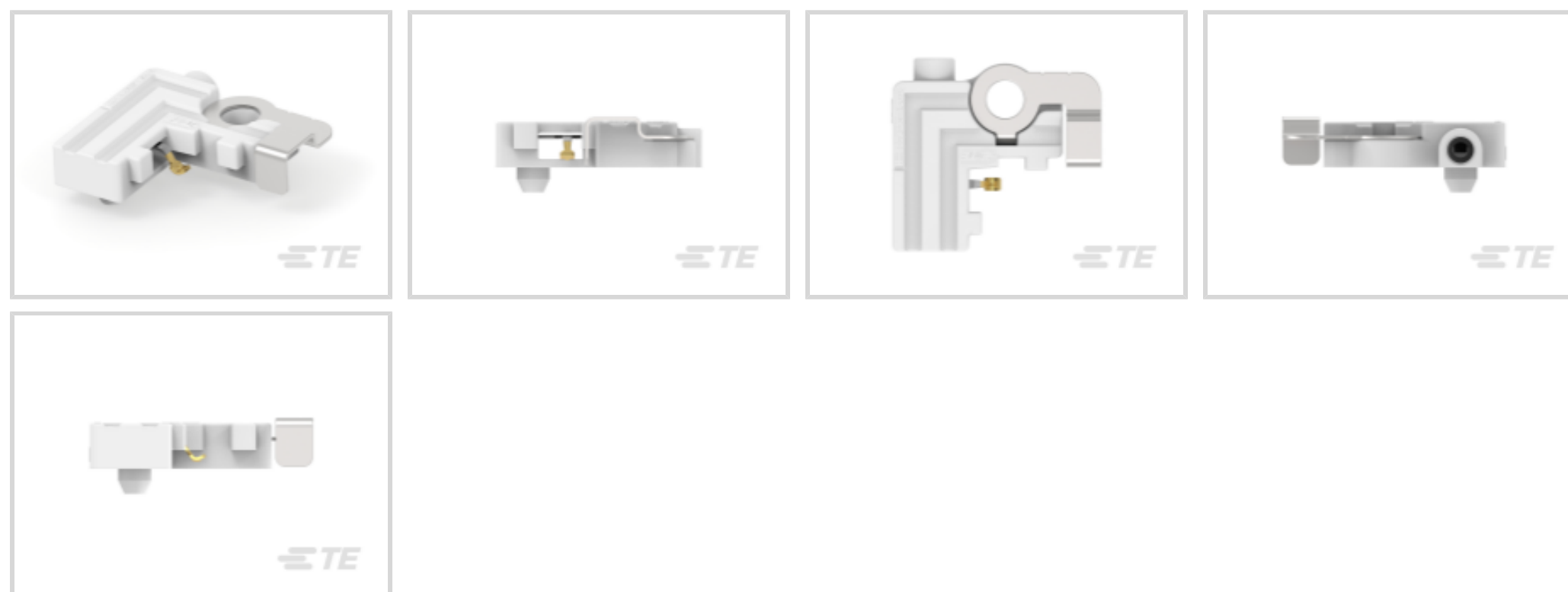
LUMAWISE | LUMAWISE LED Holders

TE Internal #: 2-2154857-2

LED Holders, Cree CXA 13xx / Cree CXA 25xx / Citizen CLL040,
Does Not Enable Zhaga Compatibility / Not Optic Compatible, 250
VDC, LUMAWISE LED Holders

[View on TE.com >](#)

Connectors > Lighting Connectors > LED Holders



Compatible LED: Citizen CLL040, Citizen CLL042, Citizen CLL050, Citizen CLL052, Cree CXA 13xx, Cree CXA 15xx, Cree CXA 18xx, Cree CXA 25xx, Cree CXA 3050, Cree CXB 1310, Cree CXB 1507, Cree CXB 1512, Cree CXB 1520, Cree CXB 1816, Cree CXB 1820, Cree CXB 1830, Cree CXB 2530, Cree CXB 2540, Cree CXB 3050, Cree CXA 30XX, Samsung LC040D, Samsung LC060D, Samsung LC080D, Seoul SBWW1F1A

Lighting Connector Features Included: **Does Not Enable Zhaga Compatibility, Not Optic Compatible**

Operating Voltage: **250 VDC**

Termination Method to Wire & Cable: **Poke-In**

Connector System: **Wire-to-Board**

Features

Product Type Features

Product Type	LED Holder
Connector System	Wire-to-Board
Sealable	No
Connector & Contact Terminates To	Wire & Cable

Configuration Features

Lighting Connector Features Included	Does Not Enable Zhaga Compatibility, Not Optic Compatible
Number of Positions	1

Electrical Characteristics

Current Rating (Max)	3 A
Operating Voltage	250 VDC

Body Features



Compatible LED

Citizen CLL040, Citizen CLL042, Citizen CLL050, Citizen CLL052, Cree CXA 13xx, Cree CXA 15xx, Cree CXA 18xx, Cree CXA 25xx, Cree CXA 3050, Cree CXB 1310, Cree CXB 1507, Cree CXB 1512, Cree CXB 1520, Cree CXB 1816, Cree CXB 1820, Cree CXB 1830, Cree CXB 2530, Cree CXB 2540, Cree CXB 3050, Cree CXA 30XX, Samsung LC040D, Samsung LC060D, Samsung LC080D, Seoul SBWW1F1A

Contact Features

Contact Mating Area Plating Material

Gold

Contact Base Material

Copper Alloy

Contact Current Rating (Max)

4 A

Termination Features

Termination Method to Wire & Cable

Poke-In

Housing Features

Housing Material

PBT GF

Usage Conditions

Operating Temperature Range

-40 – 105 °C

Operation/Application

Circuit Application

Power

Product Compliance

For compliance documentation, visit the product page on [TE.com](https://www.te.com)>

EU RoHS Directive 2011/65/EU

Compliant

EU ELV Directive 2000/53/EC

Compliant

China RoHS 2 Directive MIIT Order No 32, 2016

No Restricted Materials Above Threshold

EU REACH Regulation (EC) No. 1907/2006

Current ECHA Candidate List: JUNE 2022 (224)
Candidate List Declared Against: JAN 2022 (223)
Does not contain REACH SVHC

Halogen Content

Not Low Halogen - contains Br or Cl > 900 ppm.

Solder Process Capability

Not applicable for solder process capability

Product Compliance Disclaimer

This information is provided based on reasonable inquiry of our suppliers and represents our current actual knowledge based on the information they provided. This information is subject to change. The part numbers that TE has identified as EU RoHS compliant have a maximum concentration of 0.1% by weight in homogenous materials for lead, hexavalent chromium, mercury, PBB, PBDE, DBP, BBP, DEHP, DIBP, and 0.01% for cadmium, or qualify for an exemption to these limits as defined in the Annexes of Directive 2011/65/EU (RoHS2). Finished electrical and electronic equipment products will be CE marked as required by Directive 2011/65/EU. Components may not be CE marked. Additionally, the part numbers that TE has identified as EU ELV compliant have a maximum concentration of 0.1% by weight in homogenous materials for lead, hexavalent chromium, and mercury, and 0.01% for cadmium, or qualify for an exemption to these limits as defined in the Annexes of Directive 2000/53/EC (ELV). Regarding the REACH Regulation, the information TE provides on SVHC in articles for this part number is based on the latest European Chemicals Agency (ECHA) 'Guidance on requirements for substances in articles' posted at this URL: <https://echa.europa.eu/guidance-documents/guidance-on-reach>

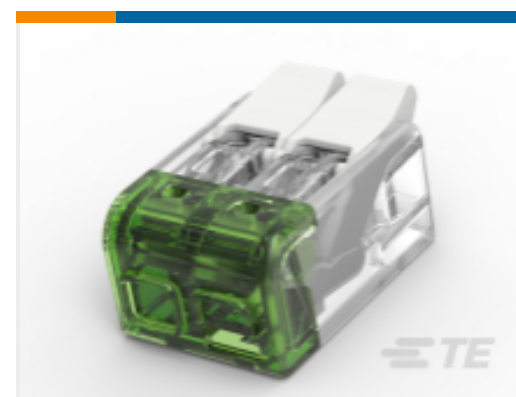
Compatible Parts



TE Part # 8-2834006-2
2P MRPK CONN_BK/WE



TE Part # 2324697-2
PUSH GRIP CONNECTOR 2P



TE Part # 2-2834245-1
2P, FLEX GRIP WIRE CONNECTOR

Also in the Series | LUMAWISE LED Holders



LED Holders(79)

Documents

Product Drawings

Socket, SCALABLE LED, 2PC, Gold, w/TS

English

CAD Files

3D PDF

3D

Customer View Model

[ENG_CVM_CVM_2-2154857-2_A_c-2-2154857-2-a.2d_dxf.zip](#)

English

Customer View Model

[ENG_CVM_CVM_2-2154857-2_A_c-2-2154857-2-a.3d_igs.zip](#)



English

Customer View Model

[ENG_CVM_CVM_2-2154857-2_A_c-2-2154857-2-a.3d_stp.zip](#)

English

By downloading the CAD file I accept and agree to the [Terms and Conditions](#) of use.

Datasheets & Catalog Pages

[1-1773700-3_LED_HOLDER_TYPE_CITIZEN](#)

English

[1-1773700-4_LED_HOLDER_TYPE_CREE](#)

English

[1-1773706-3_SCALABLEOVERVIEW_BROCHURE](#)

English

[8-1773700-8_SCALABLELEDHOLDER_APPNOTE](#)

English

[8-1773700-9_LEDBROCHURE](#)

English

[8-1773700-9_LEDBROCHURE](#)

Japanese

Product Specifications

[Application Specification](#)

English

Agency Approvals

[UL Report](#)

English